



2294 Old Hwy • Owens Cross Roads, AL 35763

Ph: 256.725.2500 or 866.725.8272

F: 877.333.8272 • WWW.TARAPOOLS.COM

SPECIAL FIGURE-8 ORDER FORM

Email to: sales@taramfg.com

Date: \_\_\_\_\_ Due: \_\_\_\_\_

DISTRIBUTOR

Company: \_\_\_\_\_

Branch: \_\_\_\_\_

Contact: \_\_\_\_\_ Phone: \_\_\_\_\_

E-Mail: \_\_\_\_\_

DISTRIBUTOR PO#: \_\_\_\_\_

SHIPPING INSTRUCTIONS

Branch:  Dealer:  Pick Up:

Ship Via: \_\_\_\_\_

DEALER/INSTALLER

Name: \_\_\_\_\_

Contact: \_\_\_\_\_ Phone: \_\_\_\_\_

Address: \_\_\_\_\_

CITY STATE ZIP

Email: \_\_\_\_\_

ORDER INFORMATION

Job Name: \_\_\_\_\_

Pattern: \_\_\_\_\_

No Tile:  Yes

Mixed Tile:  Yes

(If Yes) Tile Pattern: \_\_\_\_\_

Wall Pattern: \_\_\_\_\_

Floor Pattern: \_\_\_\_\_

MOUNTING

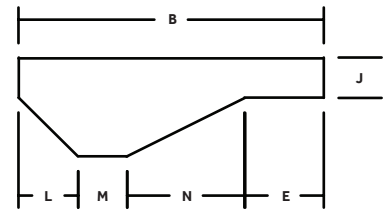
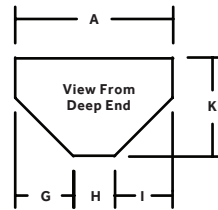
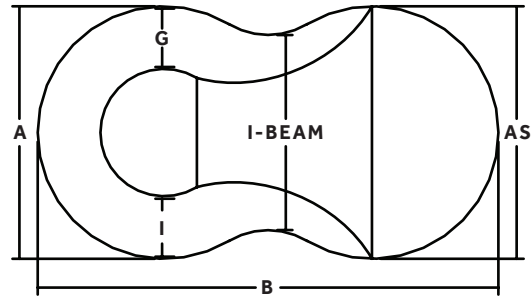
Beaded:  Overlap:  Overlap Size: \_\_\_\_\_

WARRANTY (Please Check One)

Standard:  Silver:  Gold:

COMMENTS

Self Check
G+H+I=A?
E+L+M+N=B?
STEP RISERS=J?

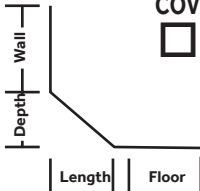


SAFETY LEDGE

\_\_\_\_\_ (in.)

COVE

Wall \_\_\_\_\_ (in.)
Depth \_\_\_\_\_ (in.)
Length \_\_\_\_\_ (in.)



I-BEAM = \_\_\_\_\_

MEASUREMENTS

(A): \_\_\_\_\_ (ft.) \_\_\_\_\_ (in.) (E): \_\_\_\_\_ (ft.) \_\_\_\_\_ (in.)

(B): \_\_\_\_\_ (ft.) \_\_\_\_\_ (in.) (N): \_\_\_\_\_ (ft.) \_\_\_\_\_ (in.)

(AS): \_\_\_\_\_ (ft.) \_\_\_\_\_ (in.) (M): \_\_\_\_\_ (ft.) \_\_\_\_\_ (in.)

(L): \_\_\_\_\_ (ft.) \_\_\_\_\_ (in.)

(G): \_\_\_\_\_ (ft.) \_\_\_\_\_ (in.)

(H): \_\_\_\_\_ (ft.) \_\_\_\_\_ (in.)

(I): \_\_\_\_\_ (ft.) \_\_\_\_\_ (in.)

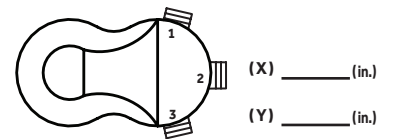
(J): \_\_\_\_\_ (ft.) \_\_\_\_\_ (in.)

(K): \_\_\_\_\_ (ft.) \_\_\_\_\_ (in.)

STEP DETAILS

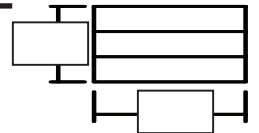
INDICATE POSITION OF VINYL STEP, IF APPLICABLE

1  2  3



IS STEP INSIDE POOL PERIMETER?

YES  NO



IF STEP IS ACROSS SHALLOW END, IS THE STEP INCLUDED IN (B) LENGTH?  YES  NO

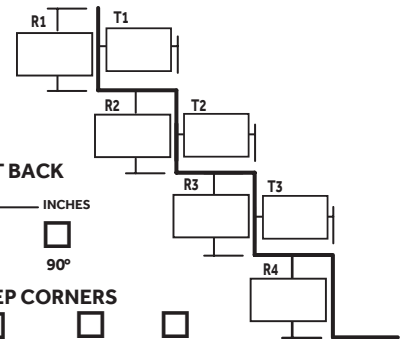
STEP FASTENER?

(Please choose one. If no boxes are checked we will not add a step fastener)

Rod Pocket  Bead Fastener  None

STEP FOAM?  1/8"  1/4"  None

VINYL STEP



SET BACK

INCHES
 45°  90°

STEP CORNERS

RADIUS  DIAGONAL  90°

\_\_\_\_\_ IN. \_\_\_\_\_ IN.

SureStep:  Matching  Other

Pattern: \_\_\_\_\_



2294 Old Hwy • Owens Cross Roads, AL 35763

Ph: 256.725.2500 or 866.725.8272

F: 877.333.8272 • WWW.TARAPOOLES.COM

## LINER ORDER CHECKLIST

Email to: sales@taramfg.com

### ORDER INFORMATION

- Did you Use a Tara Order Form and Fill it Out Completely?
- What is the Job Name? (We Recommend Using the Homeowners Last Name or Street Address)
- What is the Pattern? (Be Sure to Include mil)

### POINT-TO-POINT MEASUREMENTS

- What is the Distance Between Points A and B?
- Did you Indicate the Shallow and Deep End Breakpoints?

### POOL DIMENSIONS

- Did you Indicate the Corner Type and Size?
- Did you provide the Wall Height & Deep End Depth?
- Does the Width (A) = G+H+I?
- Does the Length (B) = E+L+M+N?
- Is the Step Radius or Straight on Oval, Radius or Freeform Pool Shape?
- Is the Step Included in the Overall Length or is the Measurement to the Front of the Step?

### VINYL COVERED STAIRS

- Did you Include the Location of the Step?
- Did you Include the Step Riser and Tread Measurements?
- Does the Sum of Riser Measurements Equal the Wall Height?
- What Type of Step Fasteners do you Need, Rod Pocket, Bead Fastener or None?
- Is there a Setback?

### GRECIAN POOLS

- Is Grecian Out-of-Square? (a point-to-point on a grecian will help prevent errors and only requires 14 points)
- Did you Provide the Hopper Shape?

### ROMAN END POOLS

- Did you Include the (W), (R) and (T) Measurements?
- Is it a Single or Double Roman End Pool?

### KIDNEY, LAZY "L", TRUE "L" POOLS

- Did you Indicate the Direction of Pool from Shallow End?