



2294 Old Hwy • Owens Cross Roads, AL 35763

Ph: 256.725.2500 or 866.725.8272

F: 877.333.8272 • WWW.TARAPOOLS.COM

SPECIAL LAZY-L GRECIAN LEFT ORDER FORM

Email to: sales@taramfg.com

Date: \_\_\_\_\_ Due: \_\_\_\_\_

DISTRIBUTOR

Company: \_\_\_\_\_

Branch: \_\_\_\_\_

Contact: \_\_\_\_\_ Phone: \_\_\_\_\_

E-Mail: \_\_\_\_\_

DISTRIBUTOR PO#: \_\_\_\_\_

SHIPPING INSTRUCTIONS

Branch:  Dealer:  Pick Up:

Ship Via: \_\_\_\_\_

DEALER/INSTALLER

Name: \_\_\_\_\_

Contact: \_\_\_\_\_ Phone: \_\_\_\_\_

Address: \_\_\_\_\_

CITY STATE ZIP

Email: \_\_\_\_\_

ORDER INFORMATION

Job Name: \_\_\_\_\_

Pattern: \_\_\_\_\_

No Tile:  Yes

Mixed Tile:  Yes

(If Yes) Tile Pattern: \_\_\_\_\_

Wall Pattern: \_\_\_\_\_

Floor Pattern: \_\_\_\_\_

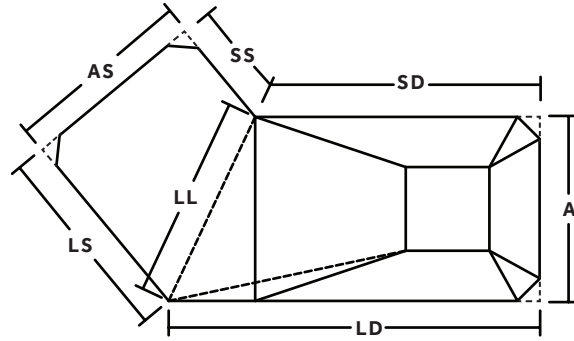
MOUNTING

Beaded:  Overlap:  Overlap Size: \_\_\_\_\_

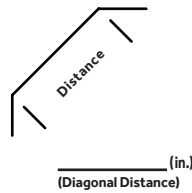
WARRANTY (Please Check One)

Standard:  Silver:  Gold:

COMMENTS

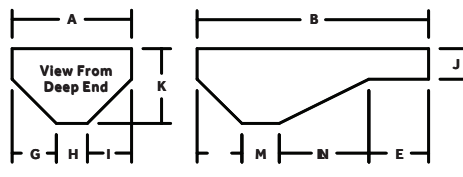
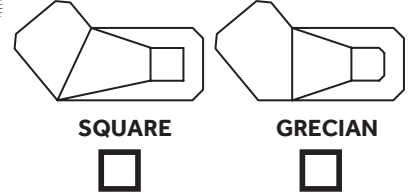


GRECIAN CORNERS



!! NOTE !! MEASURE TO SQUARED CORNERS

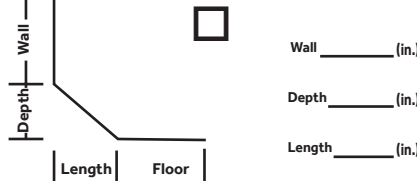
HOPPER



SAFETY LEDGE

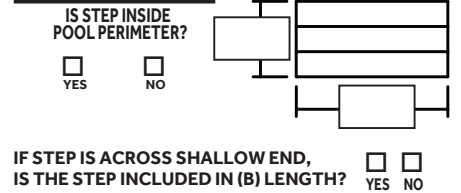
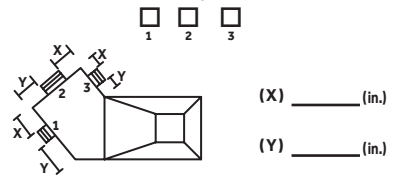


COVE IN SHALLOW END



STEP DETAILS

INDICATE POSITION OF VINYL STEP IF APPLICABLE



MEASUREMENTS

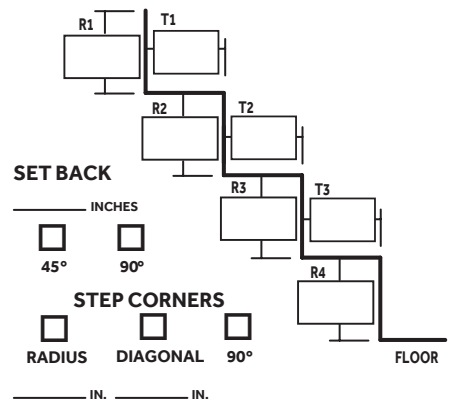
- (A): \_\_\_\_\_ (ft.) \_\_\_\_\_ (in.) (E): \_\_\_\_\_ (ft.) \_\_\_\_\_ (in.)
(B): \_\_\_\_\_ (ft.) \_\_\_\_\_ (in.) (N): \_\_\_\_\_ (ft.) \_\_\_\_\_ (in.)
(AS): \_\_\_\_\_ (ft.) \_\_\_\_\_ (in.) (M): \_\_\_\_\_ (ft.) \_\_\_\_\_ (in.)
(LS): \_\_\_\_\_ (ft.) \_\_\_\_\_ (in.) (L): \_\_\_\_\_ (ft.) \_\_\_\_\_ (in.)
(LD): \_\_\_\_\_ (ft.) \_\_\_\_\_ (in.) (G): \_\_\_\_\_ (ft.) \_\_\_\_\_ (in.)
(SS): \_\_\_\_\_ (ft.) \_\_\_\_\_ (in.) (H): \_\_\_\_\_ (ft.) \_\_\_\_\_ (in.)
(SD): \_\_\_\_\_ (ft.) \_\_\_\_\_ (in.) (I): \_\_\_\_\_ (ft.) \_\_\_\_\_ (in.)
(LL): \_\_\_\_\_ (ft.) \_\_\_\_\_ (in.) (J): \_\_\_\_\_ (ft.) \_\_\_\_\_ (in.)
(K): \_\_\_\_\_ (ft.) \_\_\_\_\_ (in.)

Self Check
G+H+I=A?
LD+SD+LS+SS÷2=B?
STEP RISERS=J?

STEP FASTENER? (Please choose one. If no boxes are checked we will not add a step fastener)
Rod Pocket Bead Fastener None

STEP FOAM? 1/8" 1/4" None

VINYL STEP



SureStep: Matching Other

Pattern: \_\_\_\_\_



2294 Old Hwy • Owens Cross Roads, AL 35763

Ph: 256.725.2500 or 866.725.8272

F: 877.333.8272 • WWW.TARAPOOLS.COM

## LINER ORDER CHECKLIST

Email to: [sales@taramfg.com](mailto:sales@taramfg.com)

### ORDER INFORMATION

- Did you Use a Tara Order Form and Fill it Out Completely?
- What is the Job Name? (We Recommend Using the Homeowners Last Name or Street Address)
- What is the Pattern? (Be Sure to Include mil)

### POINT-TO-POINT MEASUREMENTS

- What is the Distance Between Points A and B?
- Did you Indicate the Shallow and Deep End Breakpoints?

### POOL DIMENSIONS

- Did you Indicate the Corner Type and Size?
- Did you provide the Wall Height & Deep End Depth?
- Does the Width (A) = G+H+I?
- Does the Length (B) = E+L+M+N?
- Is the Step Radius or Straight on Oval, Radius or Freeform Pool Shape?
- Is the Step Included in the Overall Length or is the Measurement to the Front of the Step?

### VINYL COVERED STAIRS

- Did you Include the Location of the Step?
- Did you Include the Step Riser and Tread Measurements?
- Does the Sum of Riser Measurements Equal the Wall Height?
- What Type of Step Fasteners do you Need, Rod Pocket, Bead Fastener or None?
- Is there a Setback?

### GRECIAN POOLS

- Is Grecian Out-of-Square? (a point-to-point on a grecian will help prevent errors and only requires 14 points)
- Did you Provide the Hopper Shape?

### ROMAN END POOLS

- Did you Include the (W), (R) and (T) Measurements?
- Is it a Single or Double Roman End Pool?

### KIDNEY, LAZY "L", TRUE "L" POOLS

- Did you Indicate the Direction of Pool from Shallow End?